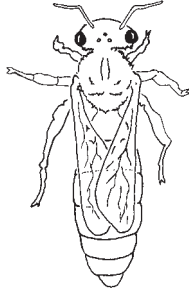
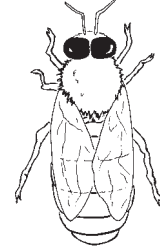


Activity**3**

Name _____ Date _____

Queen Bees, Worker Bees, and Drones, Oh My!

Honey bees are social insects and live in groups called “colonies.” Within each colony are three types, or castes, of honey bee: a queen, worker bees, and drones. Members of each caste have a slightly different body depending on the tasks they perform.

Queen**Worker****Drone**

Name three distinct features of each caste of honey bee, then answer the questions that follow on a separate sheet of paper.

Queen

Worker

Drone

Questions

- 1.** What is the role of the Queen bee in the hive?
- 2.** What is the role of the Worker bee in the hive?
- 3.** What is the role of the Drone bee in the hive?

Putting Bees on the Map: Regions of the U.S.

The United States Census Bureau breaks the U.S. into four major regions: Northeast, Midwest, South, and West. Use the Get the Buzz on Honey Bees map to see which states are located in each region, then answer the questions below.

- Which region of the United States uses honey bees to pollinate alfalfa crops? _____
- Honey bees pollinate watermelons in which two regions of the United States? _____
- How many states are in these two regions? _____
- Name the states that are NOT located in these two regions: _____

On the other side of this page, draw a map of the United States, broken into its four regions.