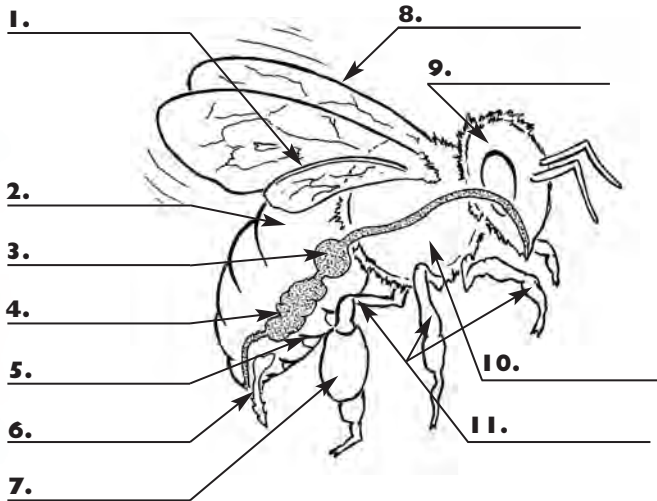


Name \_\_\_\_\_ Date \_\_\_\_\_

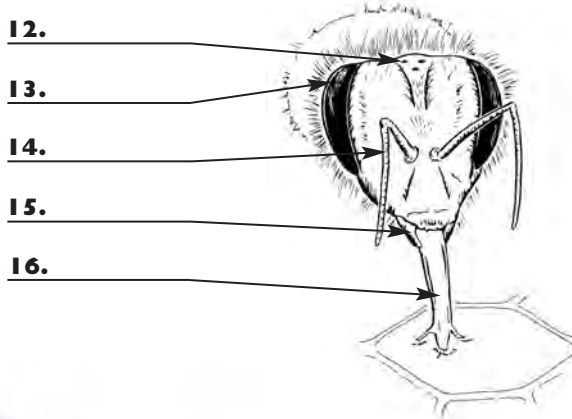
# The Bee Body



Label the bee's body parts using words from the lists to the right.



- Abdomen
- Forewing
- Head
- Hind wing
- Honey sac
- Legs
- Midgut or ventriculus
- Pollen basket
- Stinger
- Thorax
- Wax gland



- Antenna
- Compound eye
- Mandible
- Ocellus
- Proboscis or tongue

## Putting Bees on the Map: State Capitals

Capital cities are important places—they're usually where the state government is located, and where important laws and other decisions are made. Do you know the capitals of each state? Use the Get the Buzz on Honey Bees map to answer the questions below.

- Which two states rely on honey bees to pollinate sunflowers? \_\_\_\_\_
- What are the capitals of these states? \_\_\_\_\_
- In which two states do honey bees pollinate avocados? \_\_\_\_\_
- What are the capitals of these states? \_\_\_\_\_

Now make a list of every state with its capital city. How quickly can you memorize the list?